



BONITA
ISLES



IDEAL LOCATION. INSPIRED LIFESTYLE.
INCREDIBLE NEW HOME VALUES.



BONITA
ISLES

MAIN
ENTRANCE

P = Parking
M = Decorated Model

■ = Paired Villas
■ = Single Family
■ = Future Development

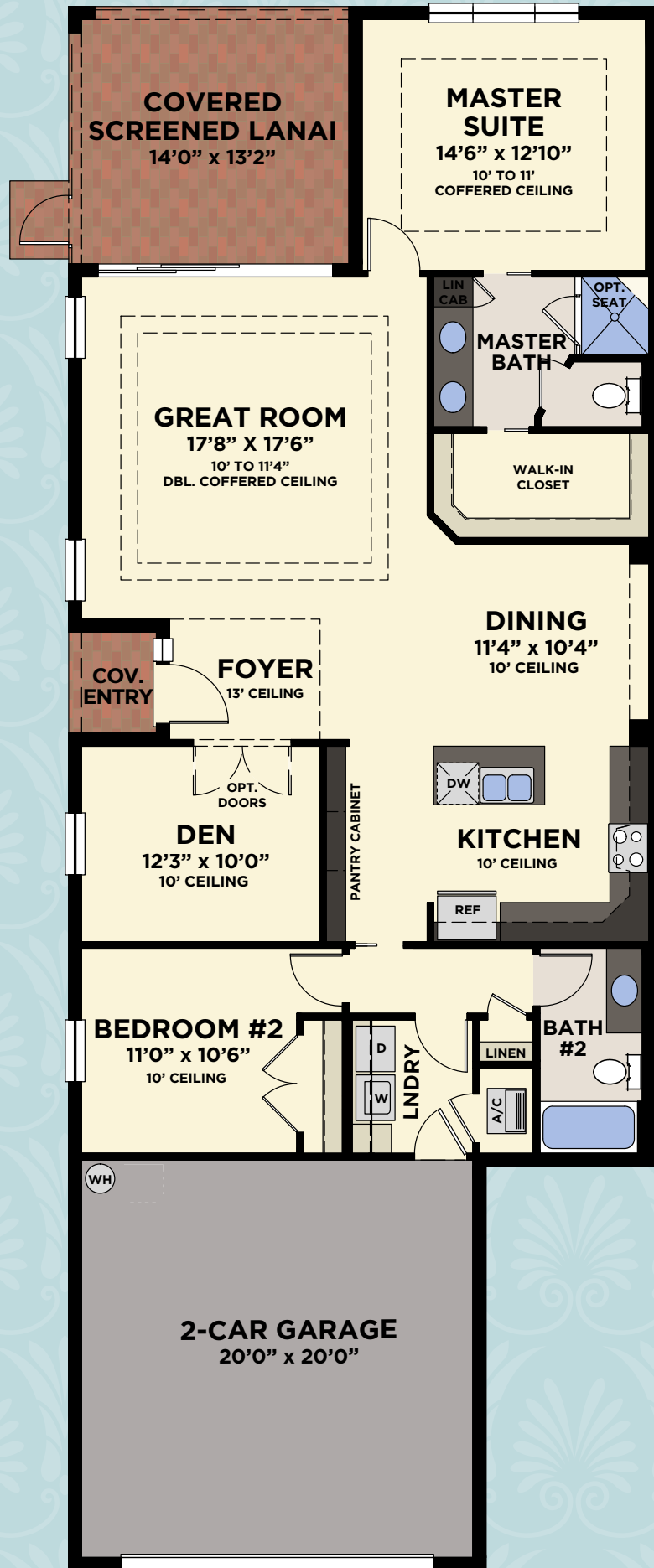
FUTURE
RESIDENT
ENTRANCE



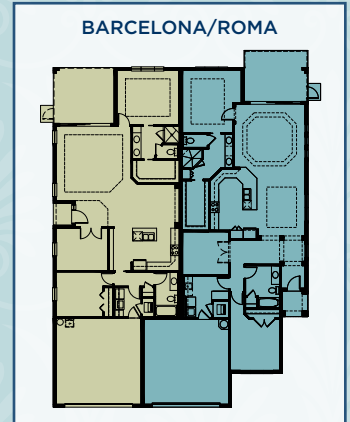


BARCELONA

2 Bedrooms, Great Room, Den, 2 Baths,
2-Car Garage



BARCELONA PLAN AVAILABLE PAIRINGS



BARCELONA	
Total - A/C Sq. Ft.	1,565
2-Car Garage	441
Covered Entry	23
Covered Screened Lanai	187
Total Sq. Ft.	2,216

Barcelona plan shown is a left garage configuration, but also available as a right garage configuration.

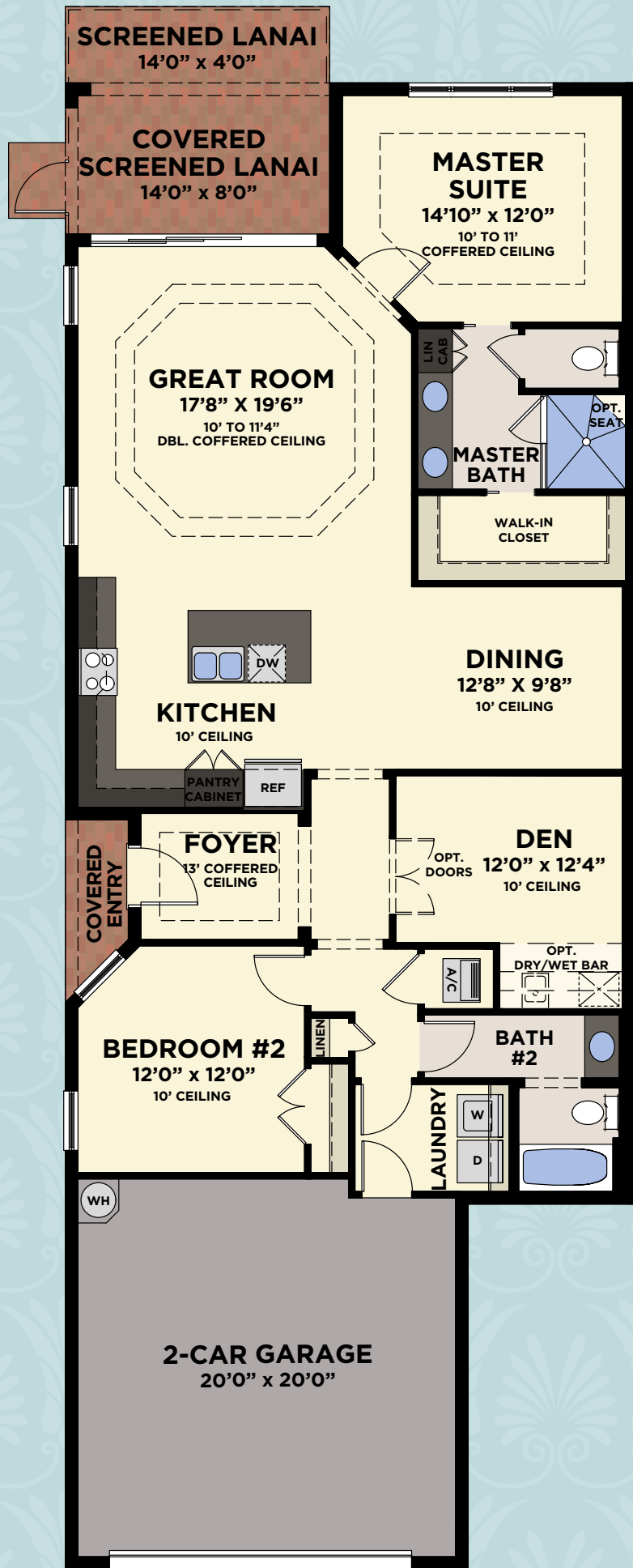


BONITA ISLES

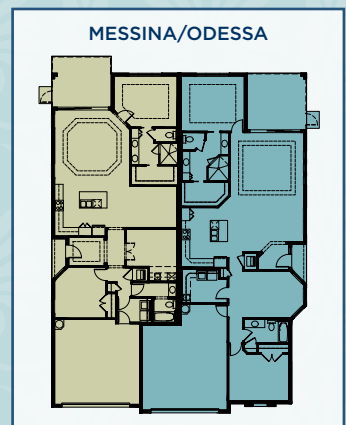
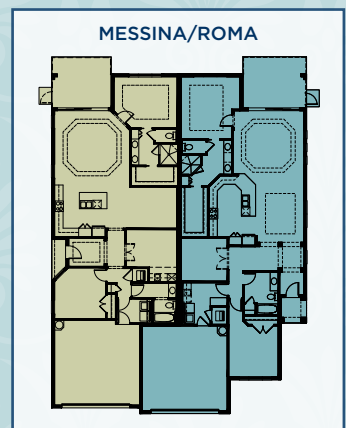
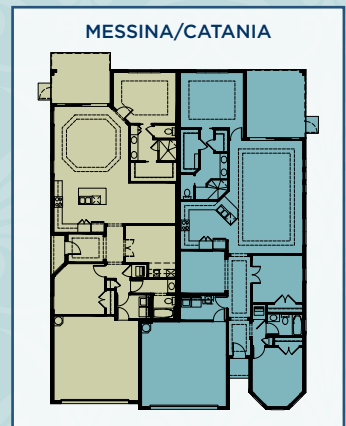


MESSINA

2 Bedrooms, Great Room, Den, 2 Baths,
2-Car Garage



MESSINA PLAN AVAILABLE PAIRINGS



MESSINA

Total - A/C Sq. Ft.	1,616
2-Car Garage	428
Covered Entry	27
Covered Screened Lanai	112
Total Sq. Ft.	2,183

Messina plan shown is a left garage configuration,
but also available as a right garage configuration.

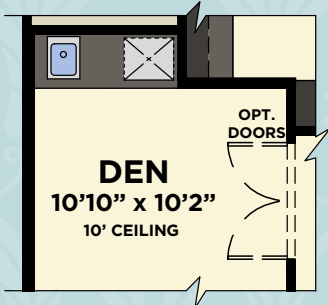


BONITA
ISLES



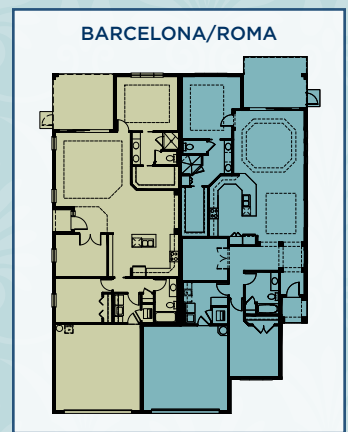
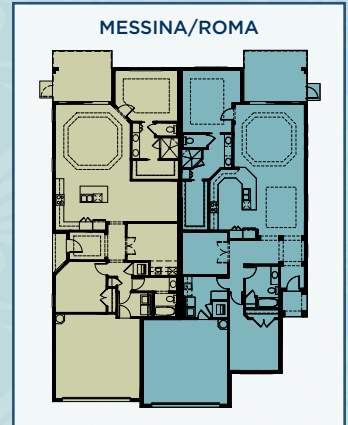
ROMA

2 Bedrooms, Great Room, Den, 2 Baths,
2-Car Garage



AVAILABLE DEN WITH WET/DRY BAR

ROMA PLAN AVAILABLE PAIRINGS



ROMA

Total - A/C Sq. Ft.	1,780
2-Car Garage	429
Covered Entry	36
Covered Screened Lanai	120
Total Sq. Ft.	2,365

Roma plan shown is a left garage configuration, but also available as a right garage configuration.



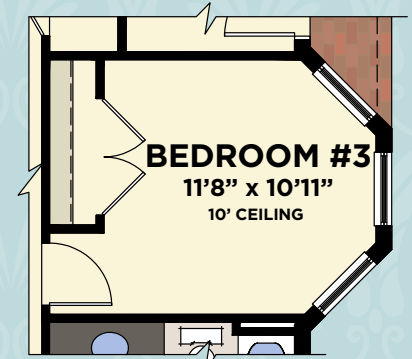
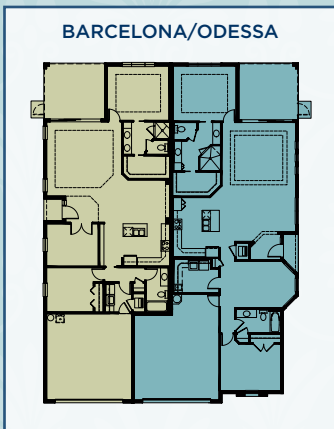
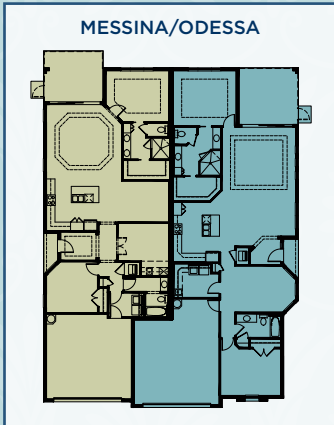
BONITA ISLES



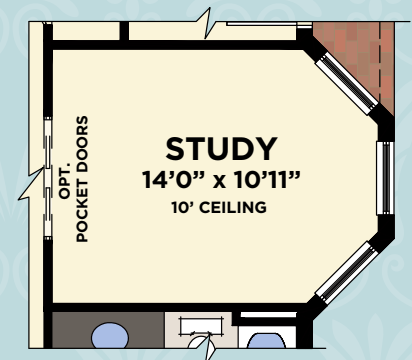
ODESSA

2 Bedrooms, Great Room, Den, 2 Baths,
2-Car Garage + Cart Storage

ODESSA PLAN
AVAILABLE PAIRINGS



AVAILABLE
BEDROOM #3



AVAILABLE
STUDY

ODESSA	
Total - A/C Sq. Ft.	1,783
2-Car Garage	480
Covered Entry	26
Covered Screened Lanai	187
Total Sq. Ft.	2,476

Odessa plan shown is a left garage configuration, but also available as a right garage configuration.



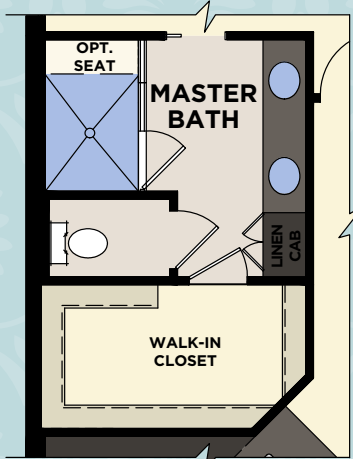
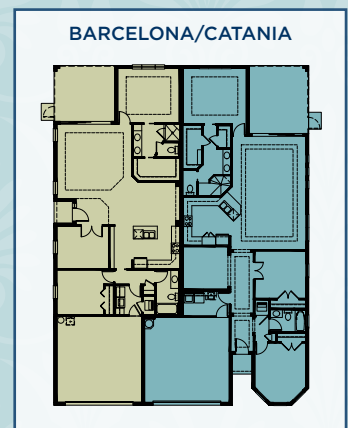
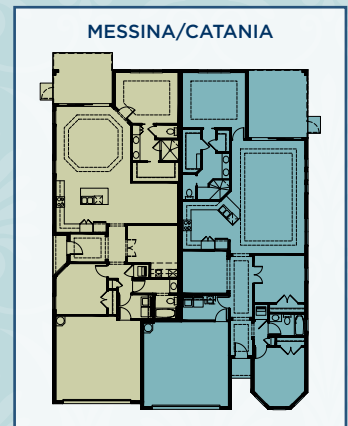
BONITA
ISLES



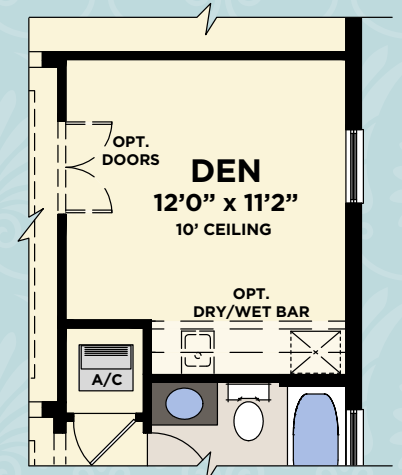
CATANIA

3 Bedrooms, Great Room, Den/Hobby Room,
2 Baths, 2-Car Garage

CATANIA PLAN AVAILABLE PAIRINGS



AVAILABLE
MASTER BATH



AVAILABLE
DEN

CATALINA

Total - A/C Sq. Ft.	1,862
2-Car Garage	432
Covered Entry	22
Covered Screened Lanai	140
Total Sq. Ft.	2,456

Catalina plan shown is a left garage configuration,
but also available as a right garage configuration.



BONITA
ISLES



BONITA ISLES PAIRED VILLAS

MESSINA/CATANIA



MESSINA/ROMA



BARCELONA/ROMA



Paired Villas shown are left garage configurations, but also available as right garage configurations.



BONITA
ISLES



BONITA ISLES PAIRED VILLAS

MESSINA/ODESSA



BARCELONA/CATANIA



BARCELONA/ODESSA



Paired Villas shown are left garage configurations, but also available as right garage configurations.

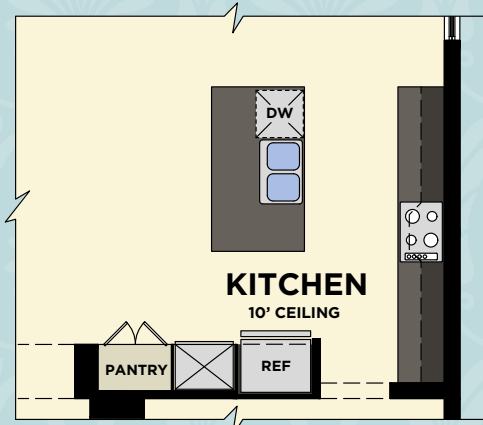


BONITA
ISLES

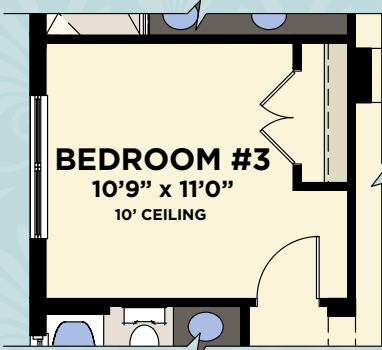


PALERMO

2 Bedrooms, Den, 2 Baths, 2-Car Garage



AVAILABLE KITCHEN W/COOKTOP & WALL OVEN



AVAILABLE BEDROOM #3

PALERMO

Total - A/C Sq. Ft.	1,919
2-Car Garage	441
Covered Entry	55
Covered Screened Lanai	216
Total Sq. Ft.	2,631



BONITA ISLES



GENOVA

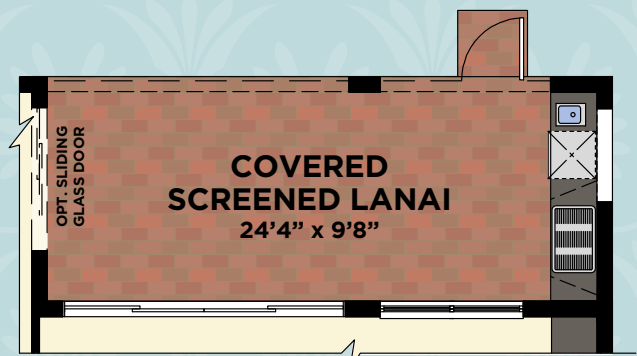
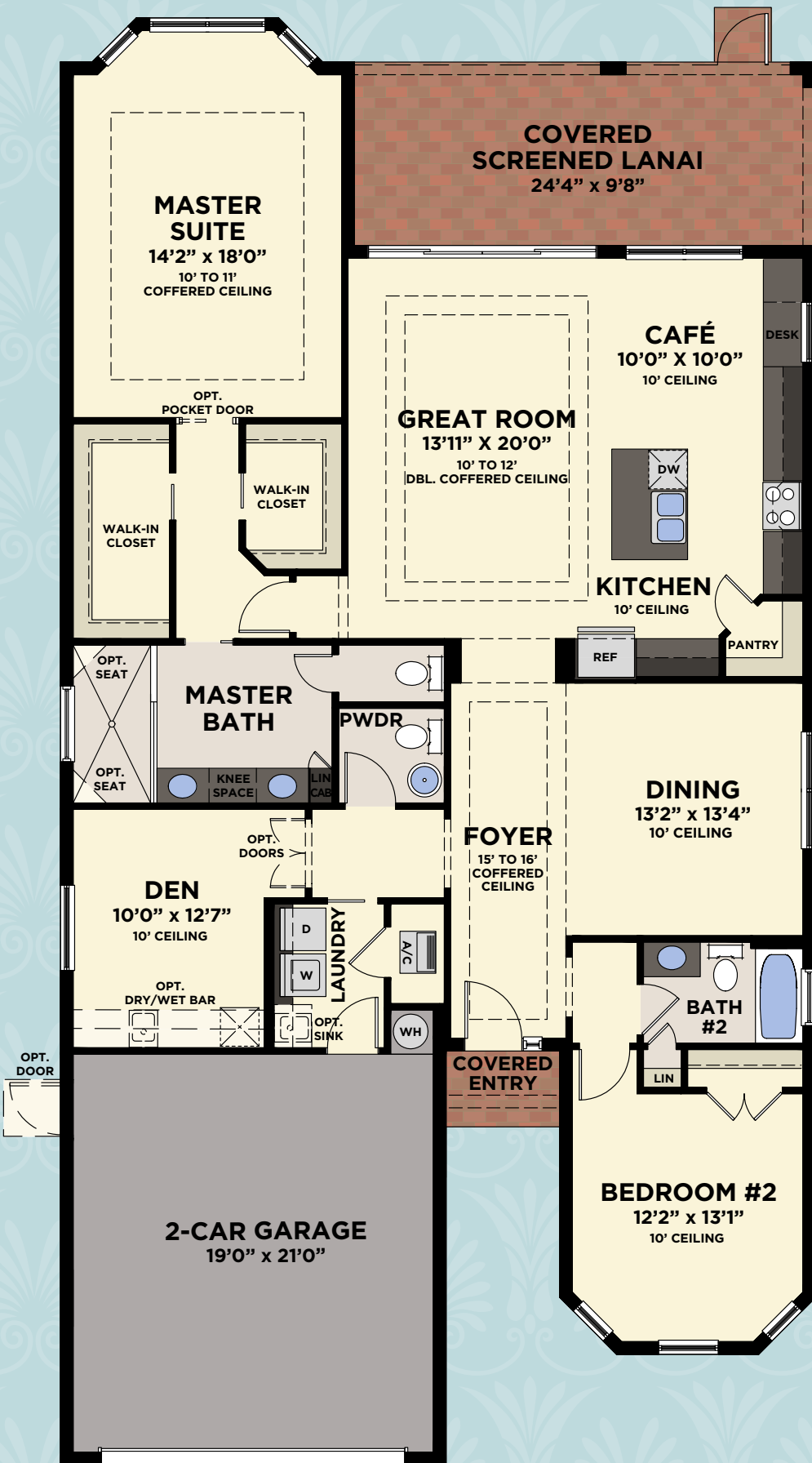
2 Bedrooms, Den, 2 1/2 Baths, 2-Car Garage



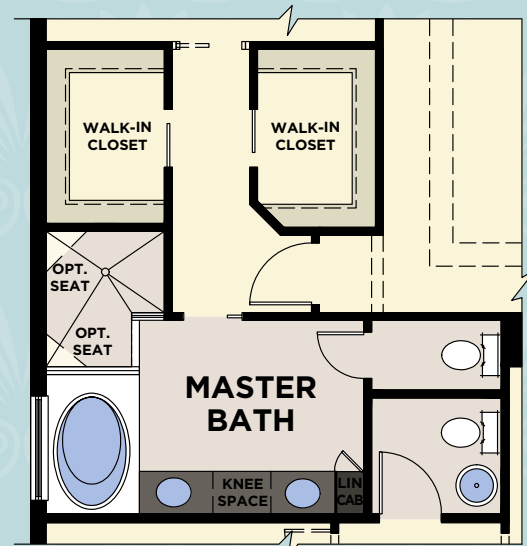
GENOVA - ELEVATION A



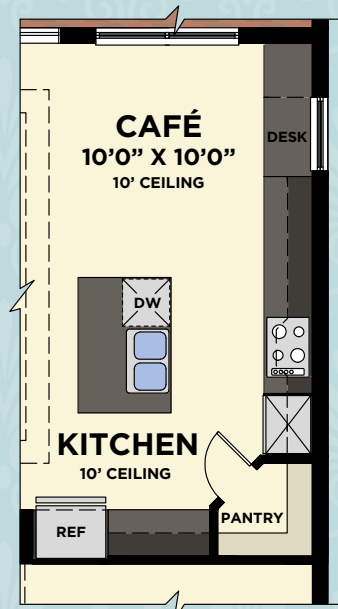
GENOVA - ELEVATION B



AVAILABLE OUTDOOR KITCHEN



AVAILABLE MASTER BATH



AVAILABLE KITCHEN W/COOKTOP & WALL OVEN



AVAILABLE BEDROOM #3



AVAILABLE DINING ROOM WET/DRY BAR

GENOVA

Total - A/C Sq. Ft.	2,070
2-Car Garage	447
Covered Entry	40
Covered Screened Lanai	235
Total Sq. Ft.	2,792

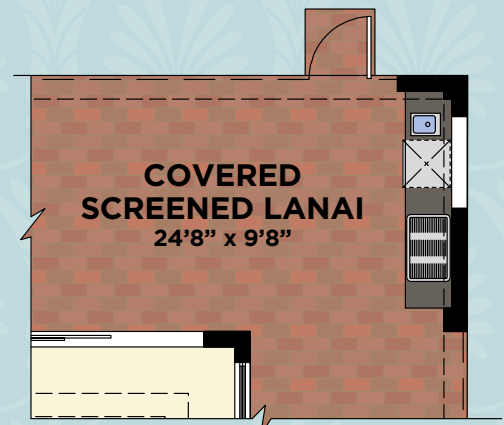


BONITA ISLES

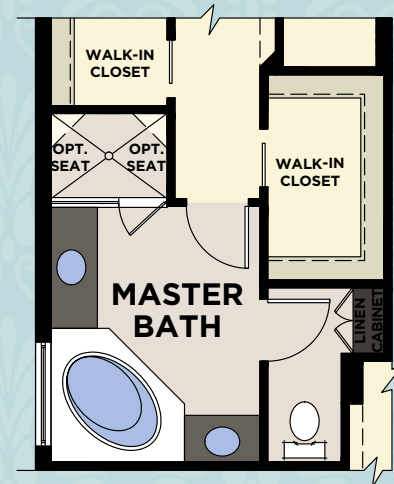


SALERNO

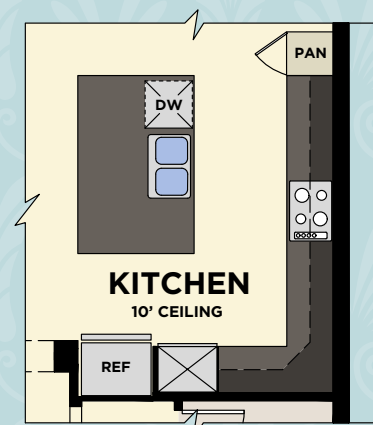
2 Bedrooms, Den, 2 1/2 Baths, 2-Car Garage



AVAILABLE OUTDOOR KITCHEN



AVAILABLE MASTER BATH



AVAILABLE KITCHEN W/COOKTOP & WALL OVEN



BONITA ISLES

SALERNO	
Total - A/C Sq. Ft.	2,080
2-Car Garage	447
Covered Entry	32
Covered Screened Lanai	349
Total Sq. Ft.	2,942

INCLUDED PREMIUM FEATURES

ENERGY EFFICIENT HOMES - SAVING YOU MORE MONEY PER MONTH ON YOUR UTILITY BILLS

- Fresh air intake and insulated sealed duct air conditioning system for improved indoor air quality
- Low volatile organic compound (VOC) **Sherwin-Williams**® paints and **Mohawk**® carpet to improve well-being
- Exterior ventilation of microwave hood
- In-wall **Taexx**® pest defense system eliminates personal contact with active ingredients
- Energy efficient double-paned low-emissivity (*Low-E*) windows, sliders and glass doors
- **GE**®, ENERGY STAR® Stainless Steel appliances
- High efficiency **Carrier**® central air conditioning and heating
- Insulated fiberglass front entry door
- Energy-saving compact fluorescent light bulbs
- R-30 insulated ceiling and R-4.1 on block walls
- Energy-efficient quick-recovery water heater
- Automated irrigation system with rain sensor
- **Kohler**® water-saving plumbing fixtures
- Water-saving, dual-flush, comfort-height elongated water closets

FOR INCREASED SAFETY AND SECURITY

- Security system with contacts on all operable windows and doors (*Excluding overhead garage doors*), includes 1 year of monitoring
- 2 alarm keypad locations for added convenience (*Garage Entry and Foyer*)
- Decorative **Schlage**® satin nickel handle-set, entry dead bolt lock and door viewer
- Private 2-car garage with automatic opener and 2 transmitters
- Smoke and carbon monoxide detectors throughout
- Impact-rated windows on front elevation
- Tempered sliding glass doors and bathroom windows for your safety
- Direct mounted galvanized steel panel storm shutters on sides and rear

FOR IMPROVED INDOOR COMFORT AND LIVABILITY

- **Schlage**® satin nickel lever hardware on all interior doors
- Raised height vanities in all master and secondary bathrooms
- **Kohler**® satin nickel lever faucets for ease of use
- **Honeywell**® 7-day programmable thermostat with a digital display for enhanced viewing
- MERV 8 air conditioning filtration system
- Rocker-style electrical switches for ease of operation

FOR ENHANCED DESIGN

- 10' to 13' (*Paired Villas*) and 10' to 16'0" (*Single Family Homes*) ceiling heights per plan with architecturally enhanced coffered ceilings
- 5 1/4" sculpted colonial wood baseboards and 2 1/4" colonial wood casings
- Screened lanais on all plans
- 8' tall entry doors
- Over-sized walk-in closets in master bedrooms
- His and hers master bathroom raised height vanities
- Professionally designed lush landscape package with fully sodded lot

FOR GREATER CONVENIENCE

- 10-year structural warranty
- 3-year **GE**® appliance warranty
- 10-year limited warranty on the air conditioning and heating system parts

FOR HIGHER QUALITY CONSTRUCTION

- Independent 3rd party testing to ensure building envelope is sealed and energy losses are diminished
- Professional 3rd party verification of central air conditioning and heating system design for assurance of circulation, air flow and comfort

- Steel reinforced monolithic concrete foundation system with reinforced concrete block exterior walls
- Reinforced concrete block party walls and rake beam for improved strength and fire protection (*Paired Villas*)
- **Sherwin-Williams**® acrylic finish on garage floors
- Professionally engineered roof truss system
- Stucco exterior finish with 3rd party testing for improved weather protection
- **Sherwin-Williams**®, **Loxon**® 2-coat exterior paint system for long lasting color retention and climate protection
- Distinctive barrel-style cement roof tile
- PEX piping plumbing system for superior performance
- **DensShield**® tile backer at all tub and shower areas for added protection

EXCEPTIONAL INTERIOR FINISHES

Kitchen

- Granite counter tops with backsplash
- Designer selected recessed panel wood cabinets with 42" uppers, range and cabinet pantries (*2070 & 2345 models have built-in corner pantry*)
- Double compartment under-mount (*50/50 or 70/30*) stainless steel sink
- **Kohler**® faucet with integrated pull-out sprayer
- 1/2 hp Badger® garbage disposal
- Stainless Steel **GE**®, ENERGY STAR® 25 cubic foot side-by-side refrigerator with in-door ice and water
- Stainless Steel **GE**®, ENERGY STAR® sound insulated automatic dishwasher
- Stainless Steel **GE**® free-standing, smooth top, self-cleaning electric range
- Stainless Steel **GE**® microwave hood with exterior ventilation
- Recessed lighting with energy-saving compact fluorescent light bulbs

Master Bathroom

- Granite counter tops with backsplash
- Raised height recessed panel wood cabinet vanities with his and hers under-mount bathroom sinks and cabinet linen closets (*Per plan*)
- Frameless glass shower enclosures with tiled recessed soap niche
- Full width mirror over vanity with decorator selected **Progress Lighting**® satin nickel wall light above
- Recessed lighting with energy-saving compact fluorescent light bulbs
- Vapor proof recessed light with energy-saving compact fluorescent light bulb in shower
- **Mohawk**® 12"x12" ceramic tile floors, 8"x10" ceramic tile on shower walls and 2"x2" ceramic tile on shower floors
- **Kohler**® fixtures with lever handles for ease of use
- Bathroom exhaust fans on separate switch
- Towel and bath accessories
- Water-saving dual-flush, comfort-height elongated water closets

Secondary and Powder Bathrooms

- Granite counter tops with backsplash
- Raised height recessed panel wood cabinet vanities with under-mount sinks (*All secondary bathrooms*)
- Pedestal sink (*All powder bathrooms*)
- Full width mirror over vanity with decorator selected **Progress Lighting**® satin nickel wall light above
- Recessed lighting with energy-saving compact fluorescent light bulbs
- Vapor proof recessed light with energy-saving compact fluorescent light bulb over tub/shower
- **Mohawk**® 12"x12" ceramic tile floors, 8"x10" ceramic tile on tub/shower walls
- **Sterling**® bathtubs in all secondary bathrooms
- **Kohler**® fixtures with lever handles for ease of use
- Bathroom exhaust fans on separate switch
- Towel and bath accessories
- Water-saving dual-flush, comfort height elongated water closets

Laundry

- Granite counter tops with backsplash (*Per plan*)
- Designer selected recessed panel wood cabinets (*Per plan*)
- **GE** ENERGY STAR® washer with Stainless Steel basket and **GE** large capacity DURA DRUM™ dryer
- One row of ventilated wire shelving

WITHIN YOUR HOME

- 18" **Mohawk**® ceramic tile in foyer, kitchen, great room, living room, dining, a/c closet, café, and all wet areas
- Luxurious **Mohawk**® stain-resistant, low VOC carpeting with high performance carpet cushion in all bedrooms and den
- Knockdown textured finish on ceilings and light orange peel finish on interior walls
- 8' tall 6-panel interior doors
- High speed structured wiring network - CAT-5E data lines/connectors and RG-6 quad shield coaxial cable
- Telephone pre-wire in kitchen, great room, den, and all bedrooms
- Cable television pre-wire in great room, den, and all bedrooms
- Ceiling fan pre-wire in great room, den, covered lanai, and all bedrooms
- 50-gallon energy-efficient heat pump water heater
- Recessed lighting with energy-saving compact fluorescent light bulbs in entry, foyer (*Per plan*), kitchen, covered lanai, and all bathrooms
- Decorative **Progress Lighting**® satin nickel fixtures in all bathrooms, dining room, foyer (*Per plan*) and café
- Electric entry door chime

- White solid-surface window sills
- Vinyl clad steel ventilated closet shelving
- Air conditioned bathrooms and walk-in closets

OUTSIDE OF YOUR HOME

- Professionally designed lush landscape package with fully sodded lot
- Automated irrigation system with rain sensor
- **Sentricon**® termite elimination system
- **Progress Lighting**® coach lights
- Hose bibs at front and rear for your convenience
- Gutters at front entry (*Per plan*)
- Designer selected paver driveways, walkways, entries and covered lanais

MINTO ONLY USES QUALITY BRANDS



**SHERWIN
WILLIAMS®**



GE imagination at work

MOHAWK®

KOHLER®

