

Buttonwood Collection
Paired Villas
Floorplans



The Isles[™]

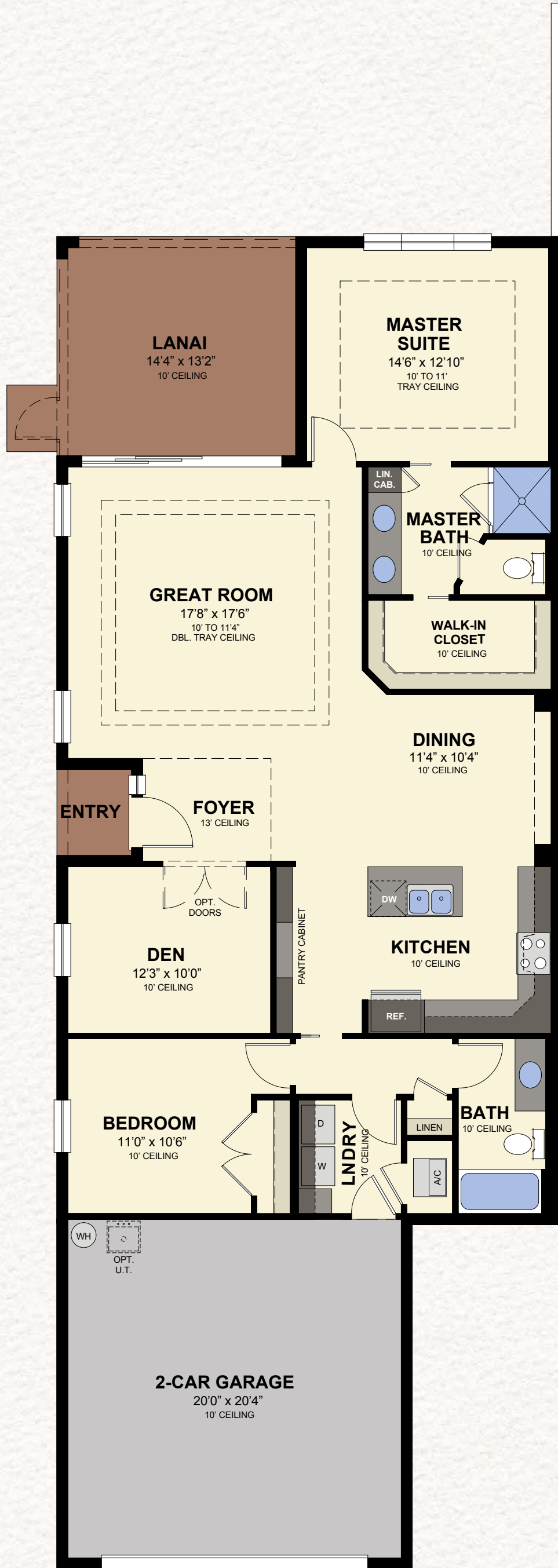
OF COLLIER PRESERVE

On the south shore of Naples Bay

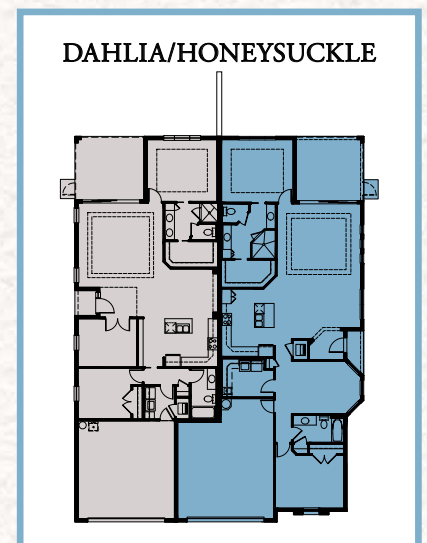
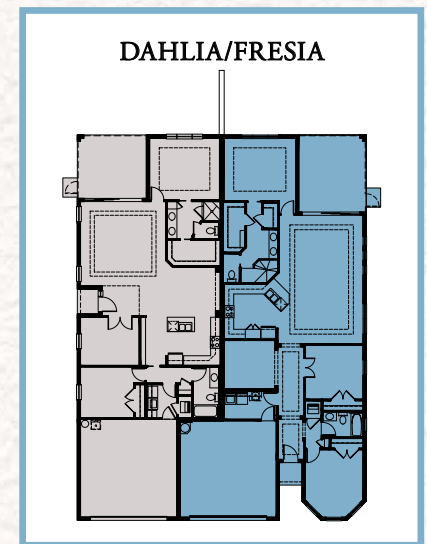
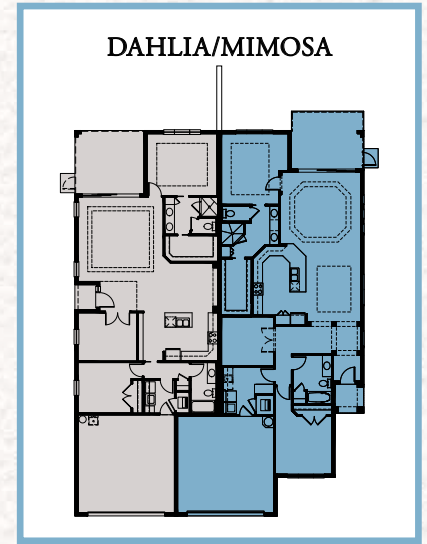
THE BUTTONWOOD COLLECTION

DAHLIA

2 Bedrooms / Great Room / Den / 2 Baths / 2-Car Garage



DAHLIA PLAN
AVAILABLE PAIRINGS

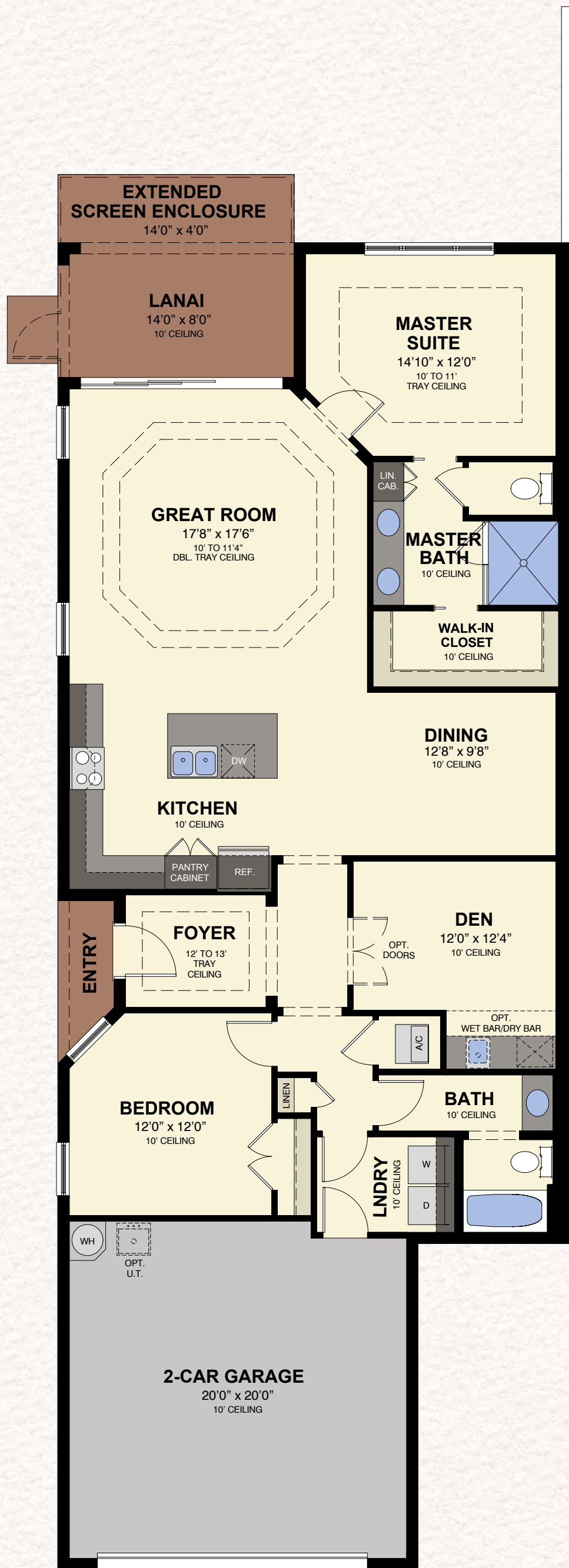


Total Living Area	1,565 S.F.
2-Car Garage	441 S.F.
Entry	23 S.F.
Lanai	189 S.F.
Total	2,218 S.F.

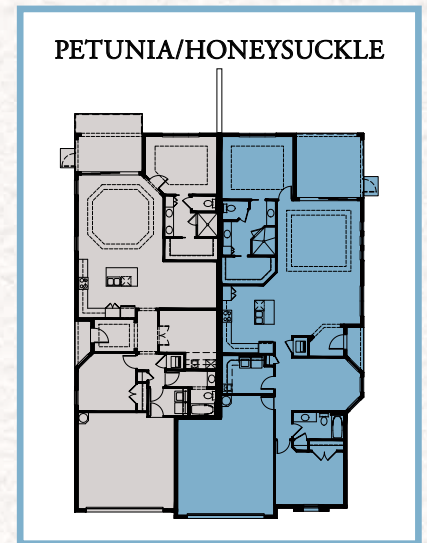
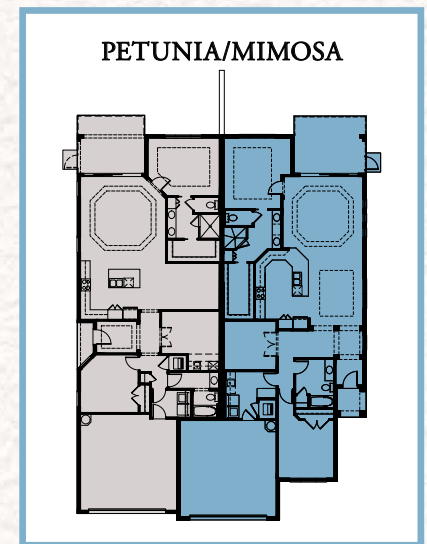
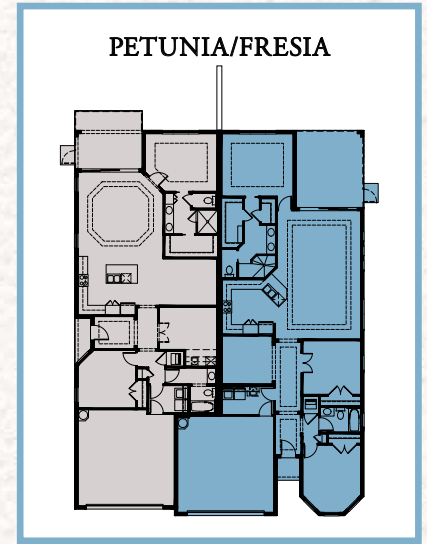
THE BUTTONWOOD COLLECTION

PETUNIA

2 Bedrooms / Great Room / Den / 2 Baths / 2-Car Garage



PETUNIA PLAN
AVAILABLE PAIRINGS



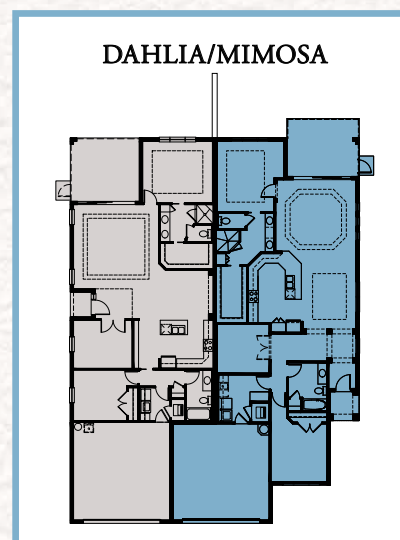
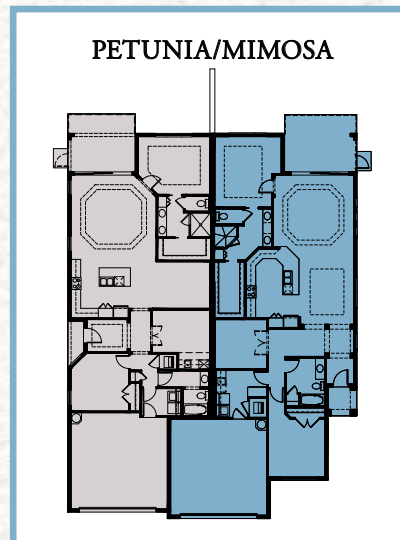
Total Living Area	1,616 S.F.
2-Car Garage	428 S.F.
Entry	27 S.F.
Lanai	112 S.F.
Extended Lanai Pavers	56 S.F.
Total	2,239 S.F.

THE BUTTONWOOD COLLECTION

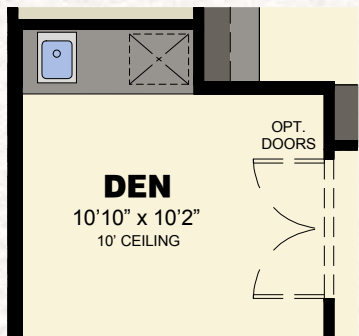
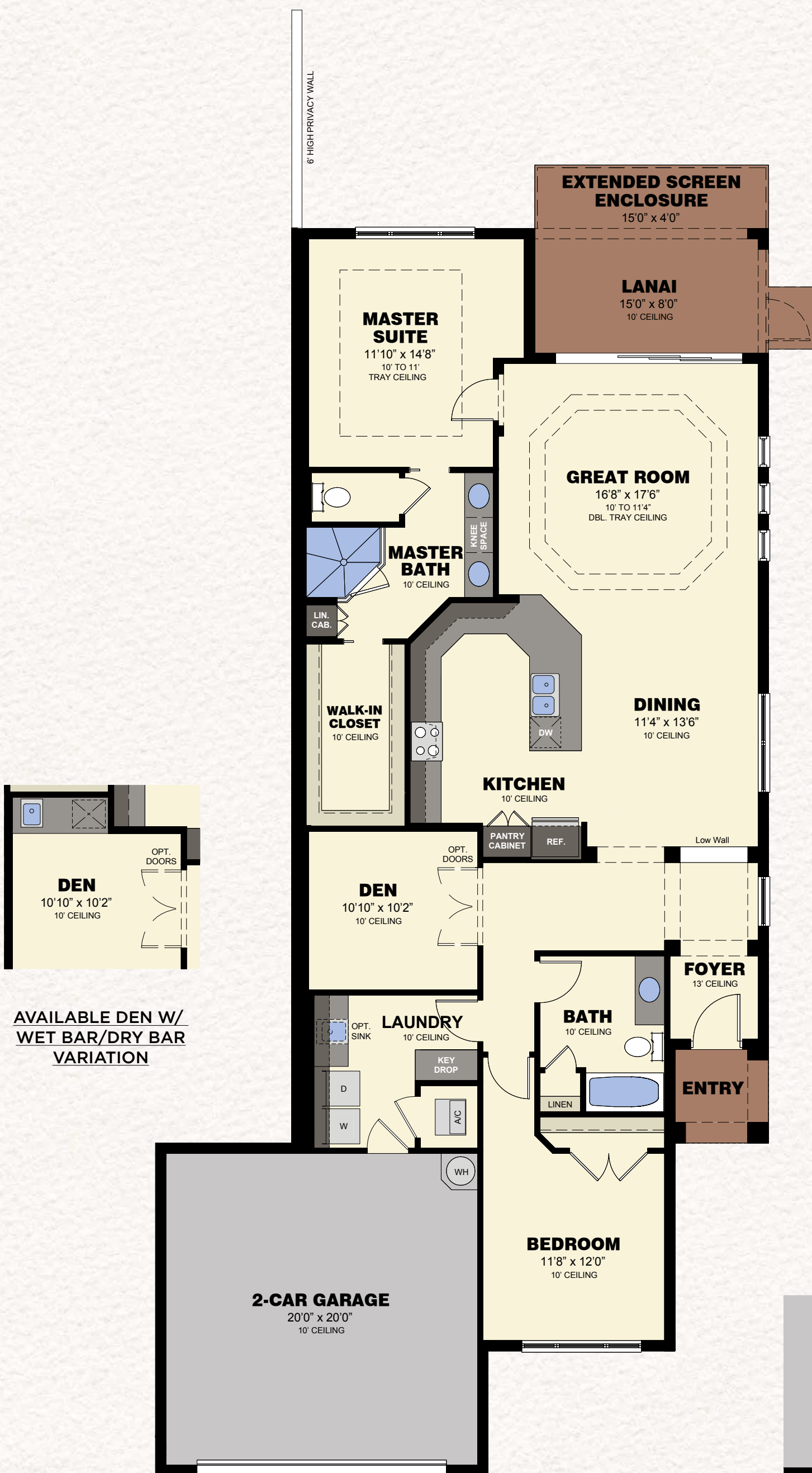
MIMOSA

2 Bedrooms / Great Room / Den / 2 Baths / 2-Car Garage

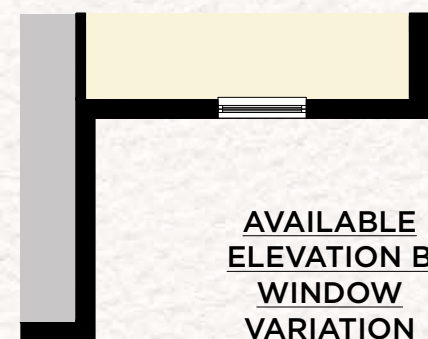
MIMOSA PLAN
AVAILABLE PAIRINGS



Total Living Area	1,780 S.F.
2-Car Garage	429 S.F.
Entry	36 S.F.
Lanai	120 S.F.
Extended Lanai Pavers	60 S.F.
Total	2,425 S.F.



AVAILABLE DEN W/
WET BAR/DRY BAR
VARIATION

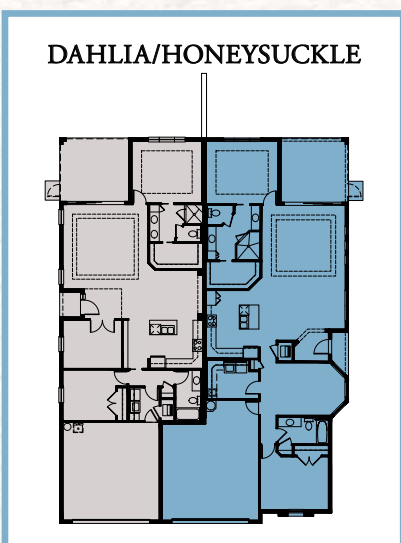
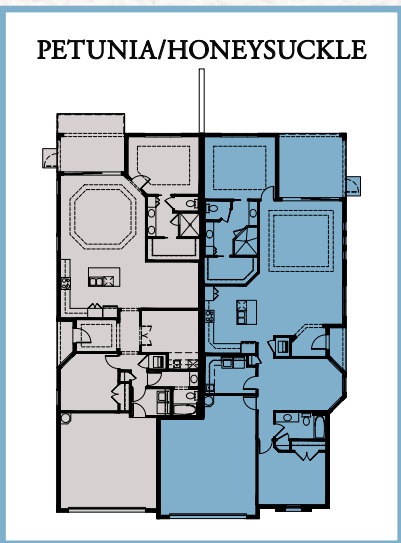


THE BUTTONWOOD COLLECTION

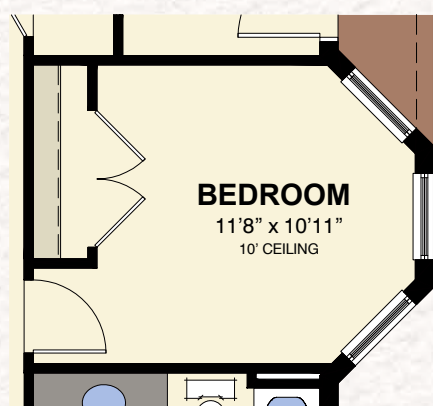
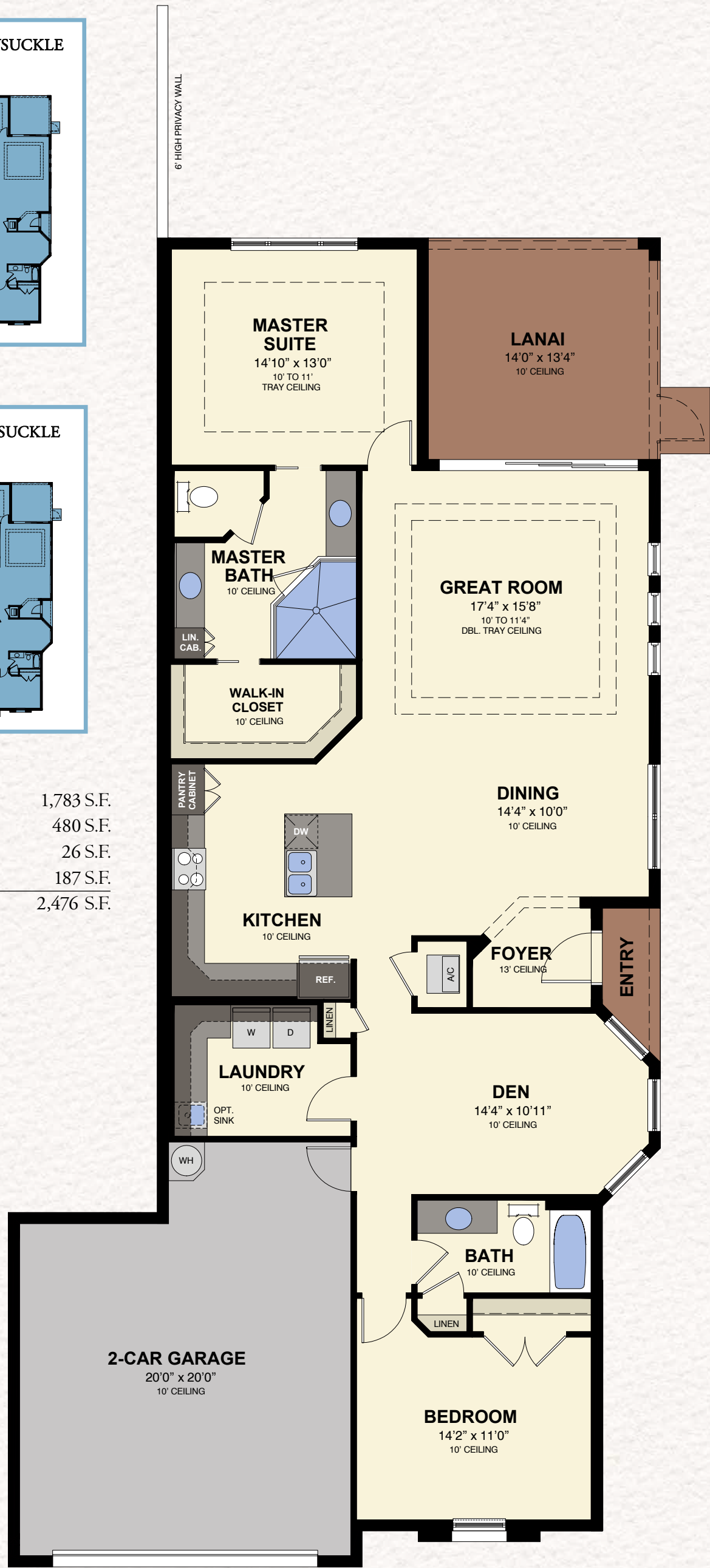
HONEYSUCKLE

2 Bedrooms / Great Room / Den / 2 Baths / 2-Car Garage

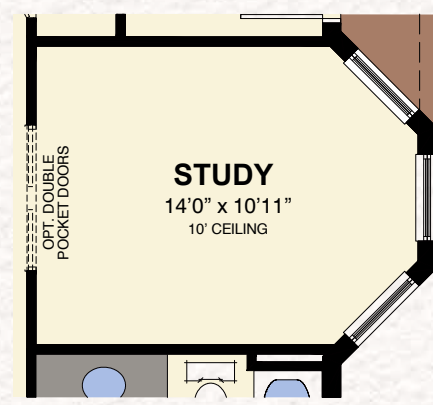
HONEYSUCKLE PLAN
AVAILABLE PAIRINGS



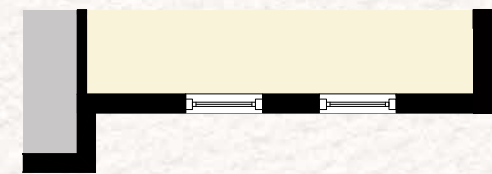
Total Living Area	1,783 S.F.
2-Car Garage	480 S.F.
Entry	26 S.F.
Lanai	187 S.F.
Total	2,476 S.F.



AVAILABLE
BEDROOM VARIATION



AVAILABLE
STUDY VARIATION



AVAILABLE ELEVATION B
WITH WINDOW VARIATION

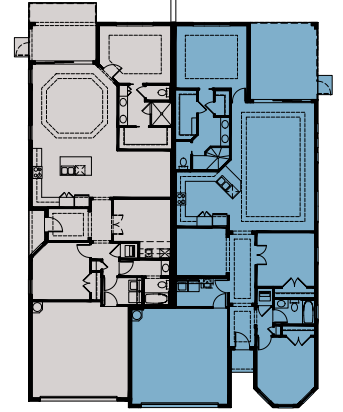
THE BUTTONWOOD COLLECTION

FRESIA

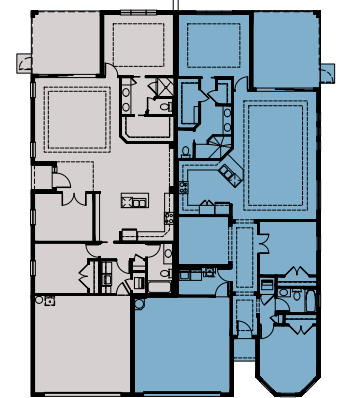
3 Bedrooms / Great Room / Hobby Room / 2-Baths / 2-Car Garage

FRESIA PLAN
AVAILABLE PAIRINGS

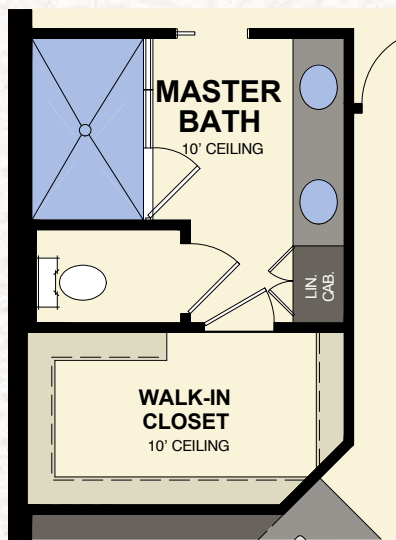
PETUNIA/FRESIA



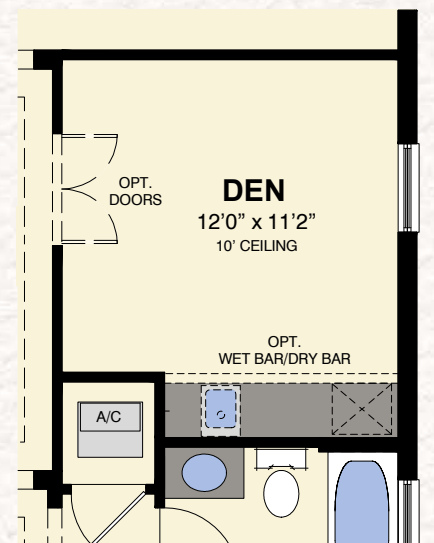
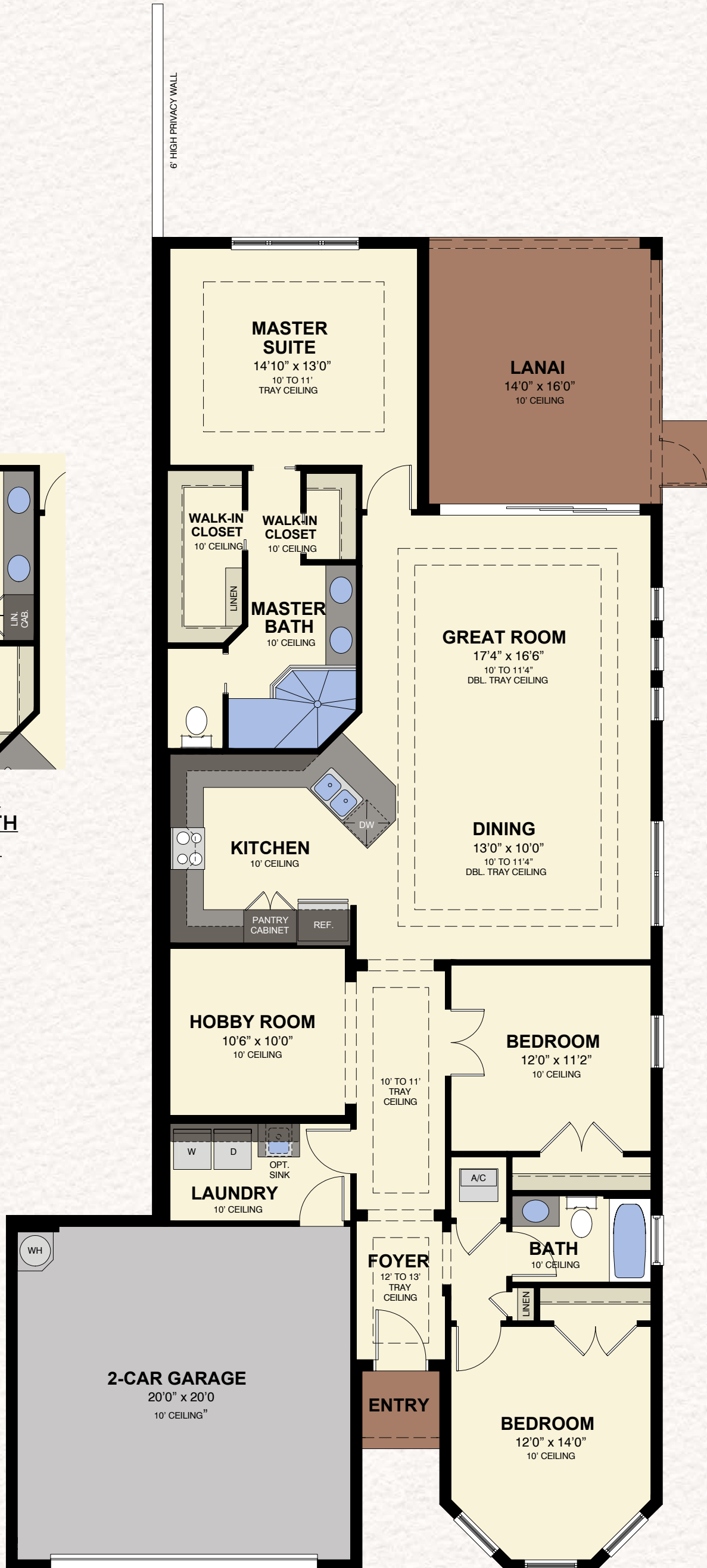
DAHLIA/FRESIA



Total Living Area	1,862 S.F.
2-Car Garage	432 S.F.
Entry	22 S.F.
Lanai	140 S.F.
Total	2,456 S.F.



AVAILABLE
MASTER BATH
VARIATION



AVAILABLE
DEN VARIATION

THE BUTTONWOOD COLLECTION

Paired Villa Homes

PETUNIA / FRESIA



PETUNIA / MIMOSA



MIMOSA / DAHLIA



Paired Villas shown are left garage configurations,
but also available as right garage configurations.

THE BUTTONWOOD COLLECTION

Paired Villa Homes

PETUNIA / HONEYSUCKLE



DAHLIA / FRESIA



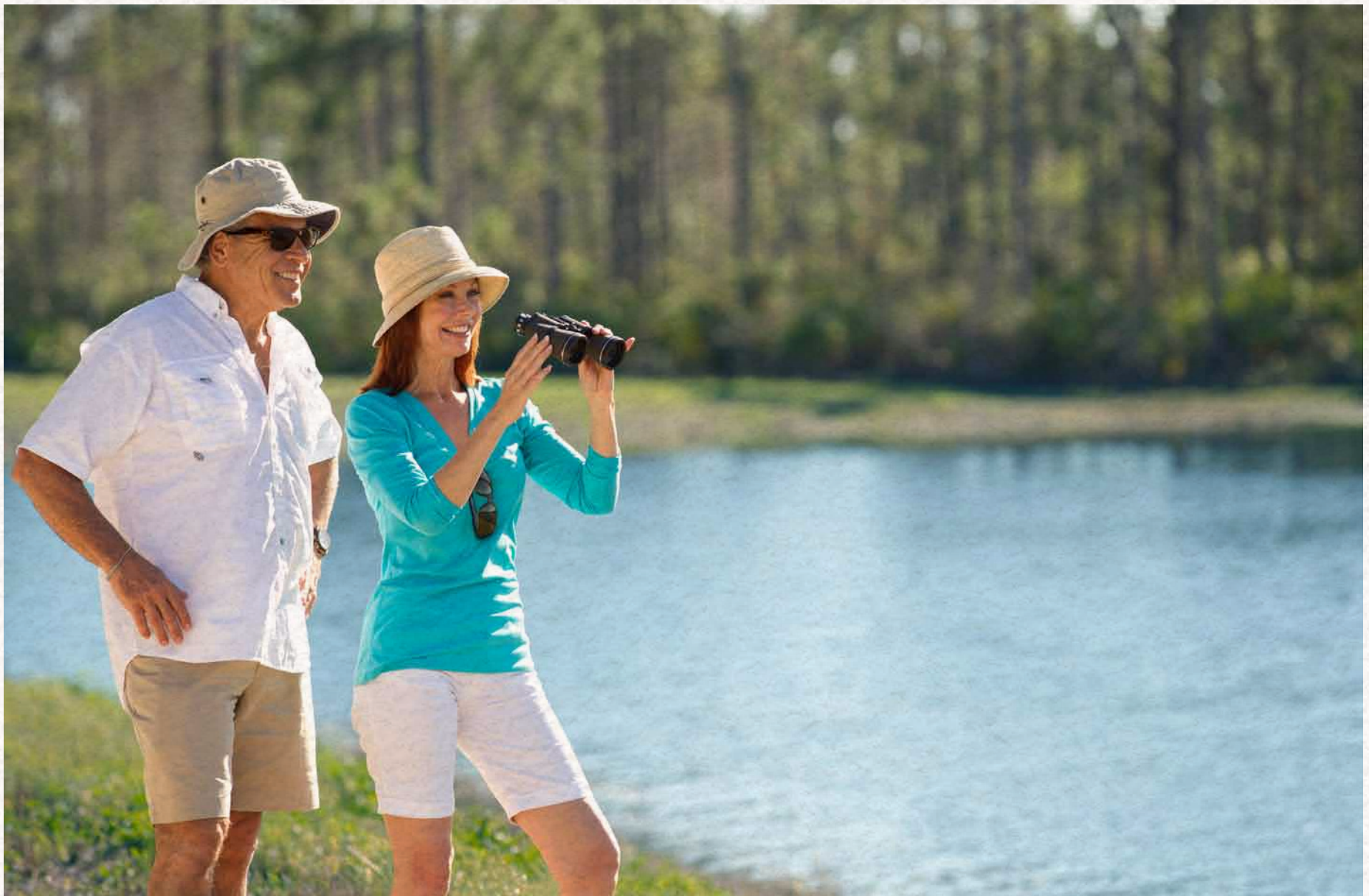
DAHLIA / HONEYSUCKLE



Paired Villas shown are left garage configurations,
but also available as right garage configurations.

An elegant *sanctuary* for everyday living.

An extraordinary *setting* for everyday adventures.



Inspired by nature. *Imagined* by Minto.

Florida's *preeminent* homebuilder.



Founded in 1955, Minto is a family-owned business that has grown into Florida's preeminent homebuilder, with more than 70,000 homes built. Minto creates award-winning new homes and communities that provide rich and rewarding lifestyles throughout Florida. In fact, we're ranked #1 by Eliant Homebuyers Choice Awards and have earned numerous other awards for our homes and communities, setting us apart as Florida's most exceptional homebuilder.

We appreciate your interest in The Isles of Collier Preserve. For more information about our award-winning homes and communities throughout Florida, please visit us at mintofla.com.



Ideally located just off the Tamiami Trail (US 41) on the south shore of Naples Bay, The Isles of Collier Preserve offers a one-of-a-kind lifestyle in the heart of all that Southwest Florida has to offer.

At The Isles of Collier Preserve you can enjoy bird watching off your back porch or boutique shopping and dining in Downtown Naples just four short miles away. All the attractions of this world-class destination are convenient to The Isles of Collier Preserve, which is nestled within one of the country's richest coastal environments. It's the best of both worlds, and only Minto could bring it to life.



From I-75, take Exit 105 and travel west on Golden Gate Parkway to Airport Pulling Road. Exit to the right, then turn left onto Airport Pulling Road and continue 3 miles to Tamiami Trail East (US 41). Turn left and continue 2.5 miles to The Isles of Collier Preserve entrance on the right.

5445 Caribe Avenue, Naples, FL 34113

888.604.3138 | mintofla.com



Artist's renderings, dimensions, specifications and features are approximate and subject to change without notice ©Minto Communities, LLC 2014. All rights reserved. Content may not be reproduced, copied, altered, distributed, stored or transferred in any form or by any means without express written permission. Artist's renderings, dimensions, specifications, prices and features are approximate and subject to change without notice. Minto, the Minto logo, The Isles of Collier Preserve and The Isles of Collier Preserve logo are trademarks of Minto Communities, LLC and/or its affiliates. CGC 1519880. 10/2014

The Isles[™]
OF COLLIER PRESERVE