



BONITA
ISLES™



IDEAL LOCATION. INSPIRED LIFESTYLE.
INCREDIBLE NEW HOME VALUES.



BONITA
ISLES™

MAIN
ENTRANCE

P = Parking
M = Decorated Model



■ = Paired Villas
■ = Single Family
■ = Future Development

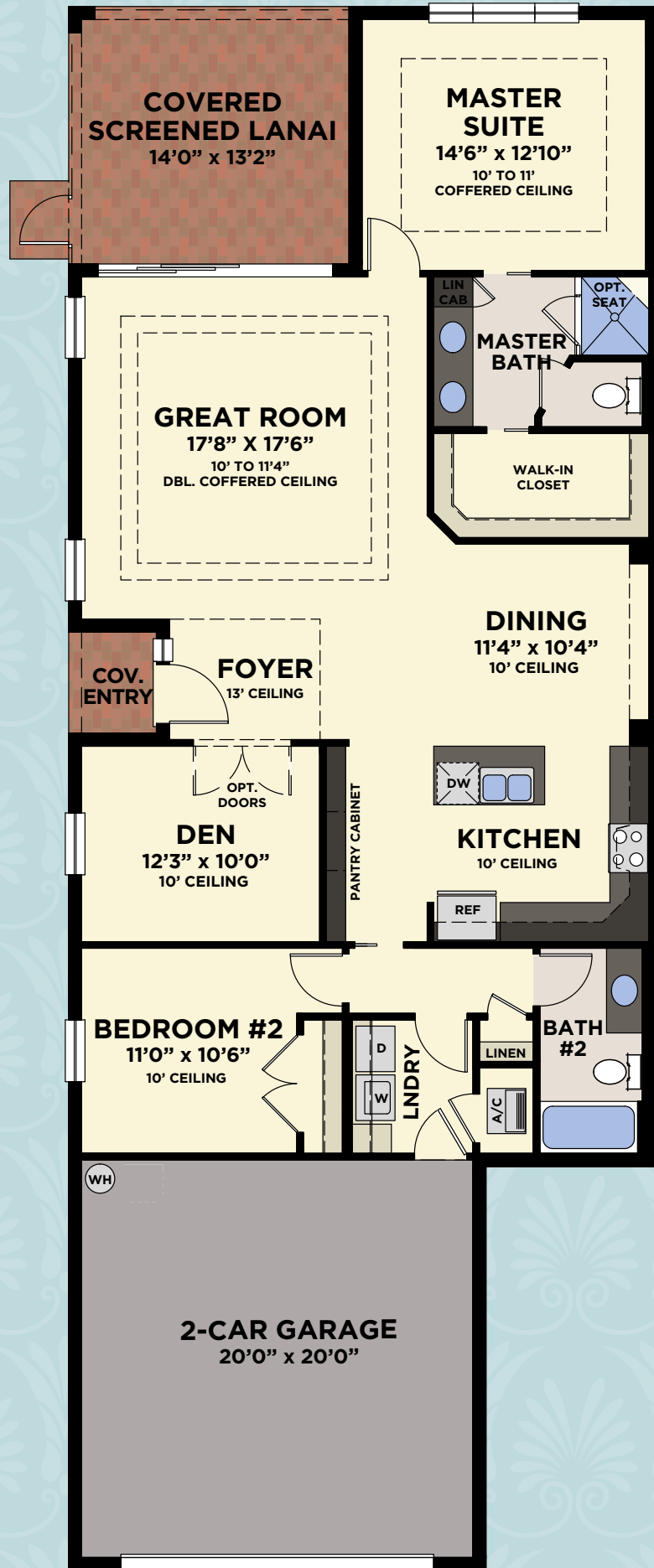
RESIDENT
ENTRANCE



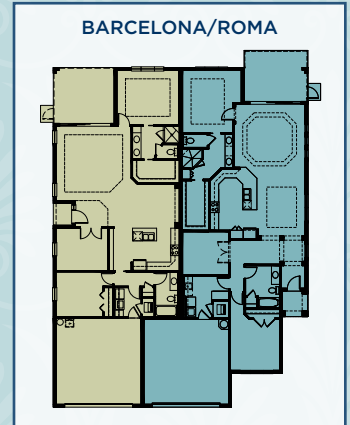


BARCELONA

2 Bedrooms, Great Room, Den, 2 Baths,
2-Car Garage



BARCELONA PLAN AVAILABLE PAIRINGS



BARCELONA	
Total - A/C Sq. Ft.	1,565
2-Car Garage	441
Covered Entry	23
Covered Screened Lanai	187
Total Sq. Ft.	2,216

Barcelona plan shown is a left garage configuration, but also available as a right garage configuration.

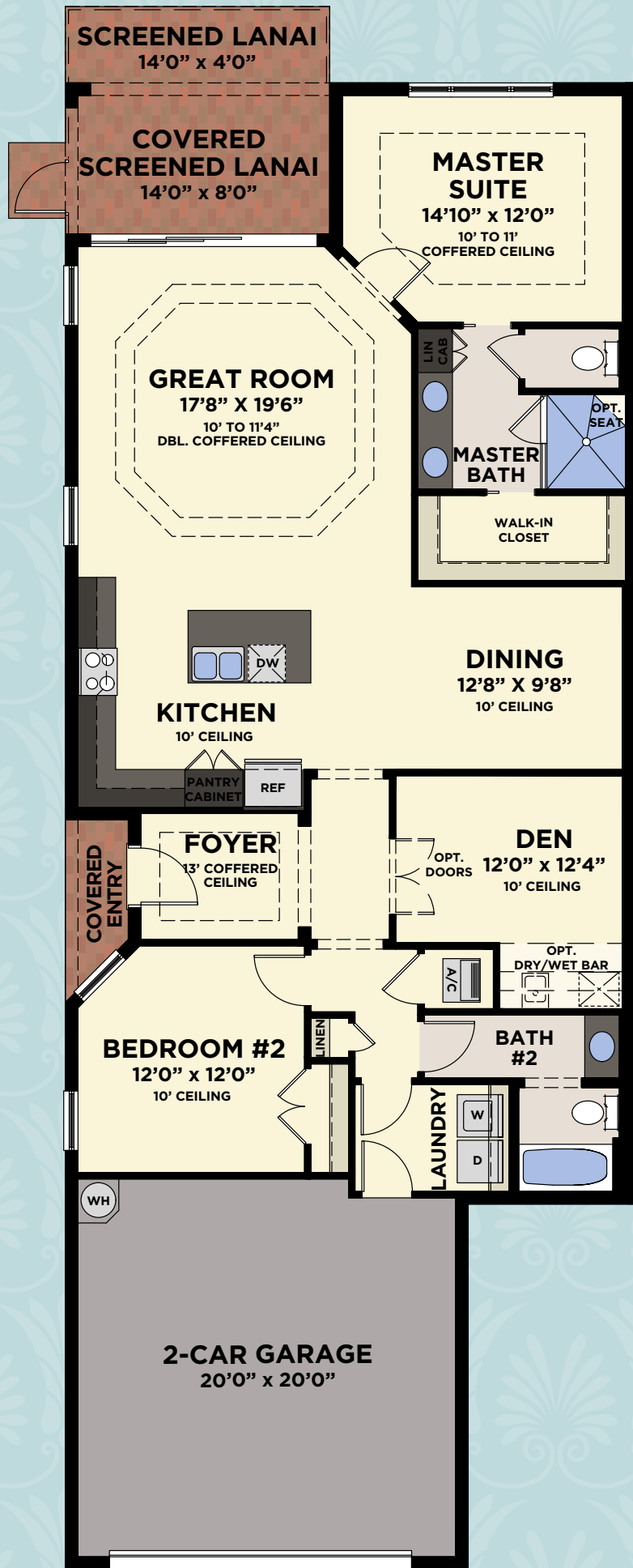


BONITA ISLES™

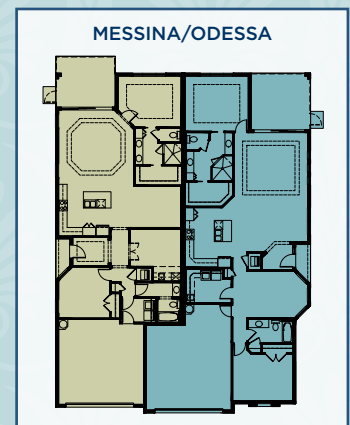
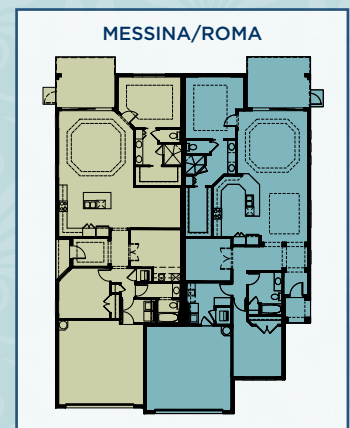
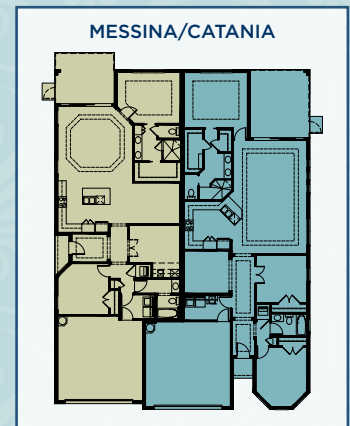


MESSINA

2 Bedrooms, Great Room, Den, 2 Baths,
2-Car Garage



MESSINA PLAN AVAILABLE PAIRINGS



MESSINA

Total - A/C Sq. Ft.	1,616
2-Car Garage	428
Covered Entry	27
Covered Screened Lanai	112
Total Sq. Ft.	2,183

Messina plan shown is a left garage configuration,
but also available as a right garage configuration.

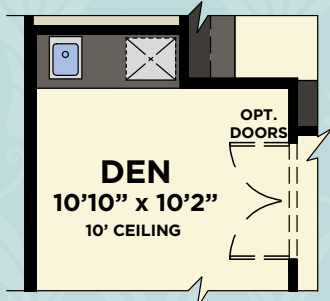


BONITA
ISLES™



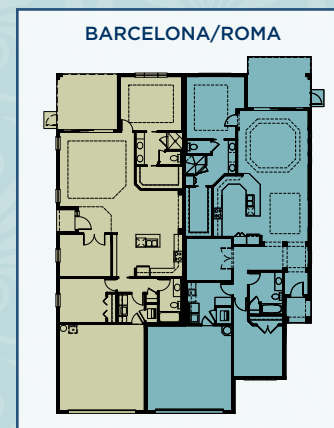
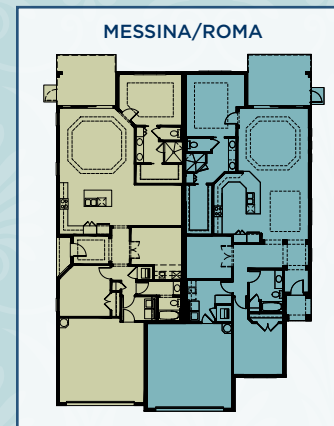
ROMA

2 Bedrooms, Great Room, Den, 2 Baths,
2-Car Garage



AVAILABLE DEN WITH WET/DRY BAR

ROMA PLAN AVAILABLE PAIRINGS



ROMA

Total - A/C Sq. Ft.	1,780
2-Car Garage	429
Covered Entry	36
Covered Screened Lanai	120
Total Sq. Ft.	2,365

Roma plan shown is a left garage configuration, but also available as a right garage configuration.



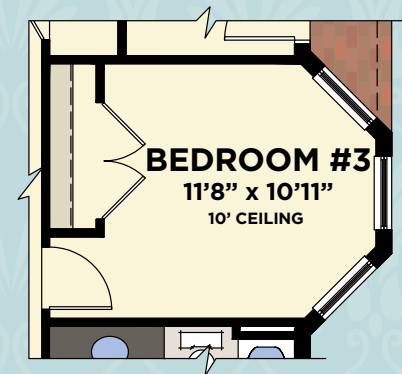
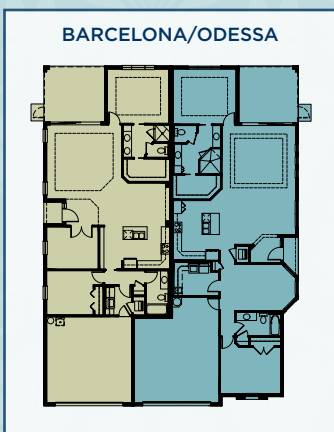
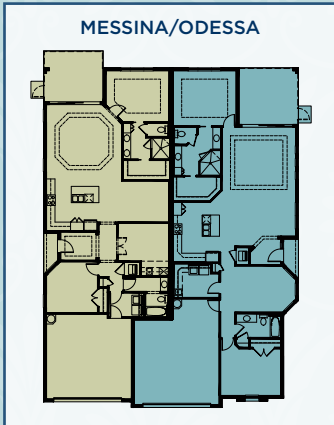
BONITA ISLES™



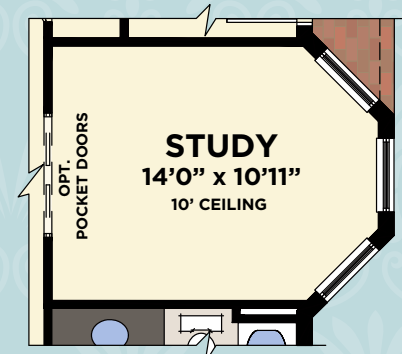
ODESSA

2 Bedrooms, Great Room, Den, 2 Baths,
2-Car Garage + Cart Storage

ODESSA PLAN AVAILABLE PAIRINGS



AVAILABLE
BEDROOM #3



AVAILABLE
STUDY

ODESSA

Total - A/C Sq. Ft.	1,783
2-Car Garage	480
Covered Entry	26
Covered Screened Lanai	187
Total Sq. Ft.	2,476

Odessa plan shown is a left garage configuration,
but also available as a right garage configuration.



BONITA
ISLES™



BONITA ISLES PAIRED VILLAS

MESSINA/CATANIA



MESSINA/ROMA



BARCELONA/ROMA



Paired Villas shown are left garage configurations, but also available as right garage configurations.



BONITA
ISLES™



BONITA ISLES PAIRED VILLAS

MESSINA/ODESSA



BARCELONA/CATANIA



BARCELONA/ODESSA



Paired Villas shown are left garage configurations, but also available as right garage configurations.



BONITA
ISLES™



PALERMO

2 Bedrooms, Den, 2 Baths, 2-Car Garage



PALERMO	
Total - A/C Sq. Ft.	1,919
2-Car Garage	441
Covered Entry	55
Covered Screened Lanai	216
Total Sq. Ft.	2,631

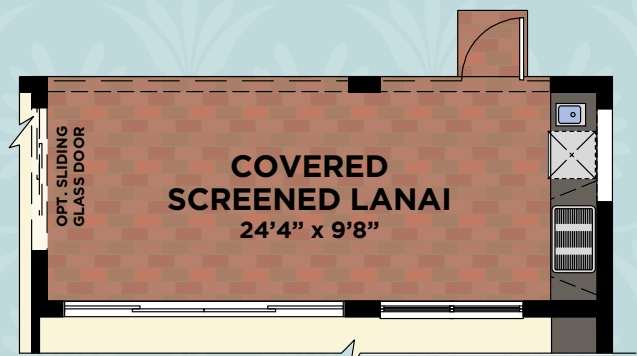
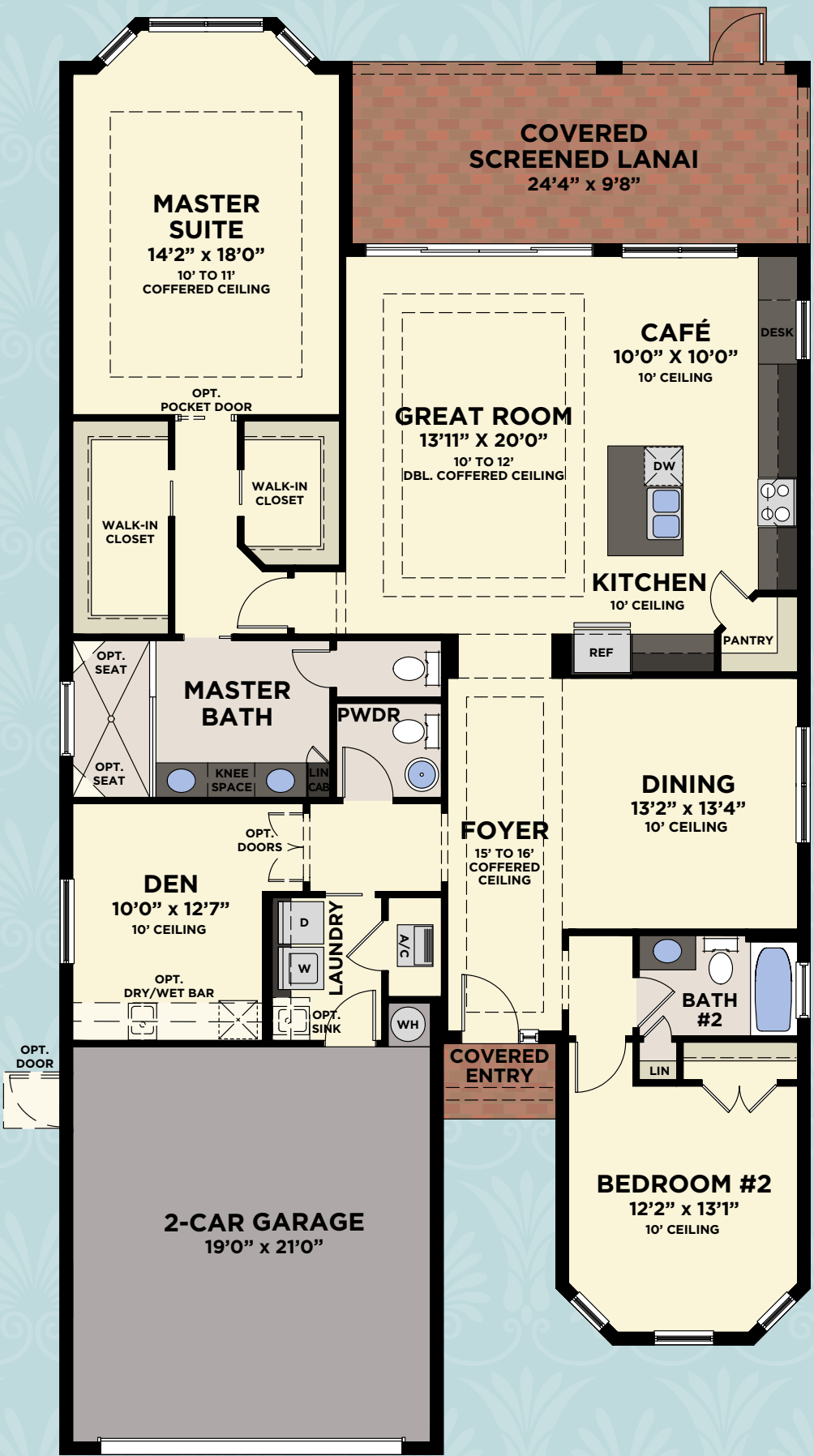


BONITA ISLES™

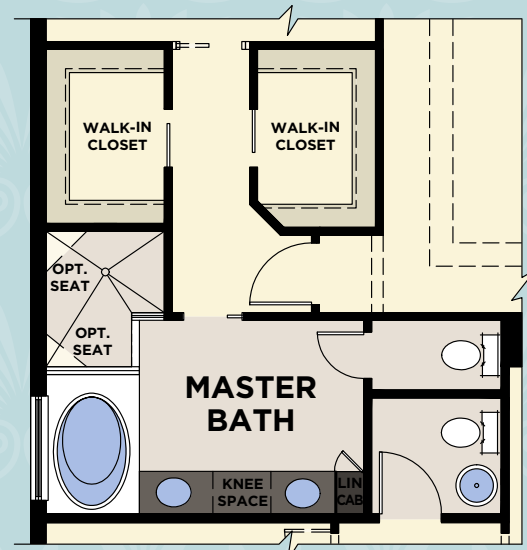


GENOVA

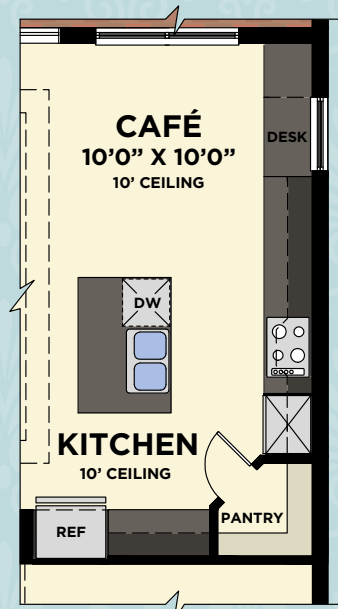
2 Bedrooms, Den, 2 1/2 Baths, 2-Car Garage



AVAILABLE OUTDOOR KITCHEN



AVAILABLE MASTER BATH



AVAILABLE KITCHEN W/COOKTOP & WALL OVEN



AVAILABLE BEDROOM #3



AVAILABLE DINING ROOM WET/DRY BAR

GENOVA

Total - A/C Sq. Ft.	2,070
2-Car Garage	447
Covered Entry	40
Covered Screened Lanai	235
Total Sq. Ft.	2,792

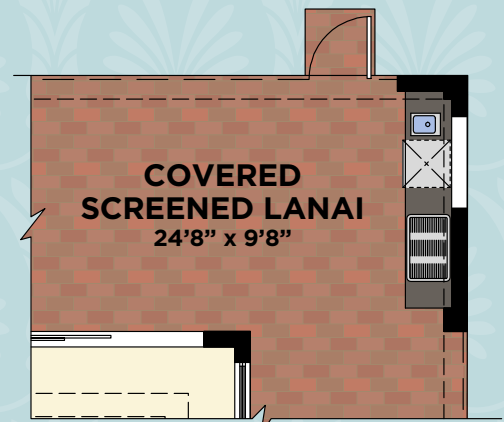


BONITA ISLES™

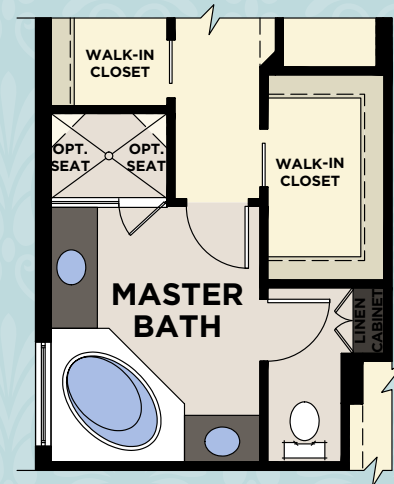


SALERNO

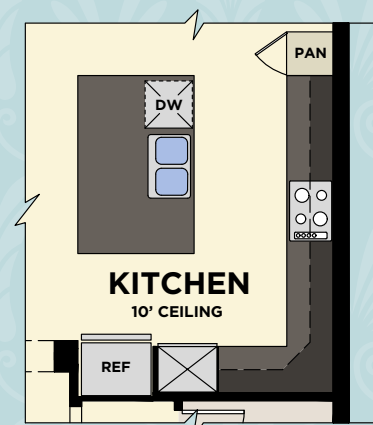
2 Bedrooms, Den, 2 1/2 Baths, 2-Car Garage



AVAILABLE OUTDOOR KITCHEN



AVAILABLE MASTER BATH



AVAILABLE KITCHEN W/COOKTOP & WALL OVEN



BONITA ISLES™

SALERNO	
Total - A/C Sq. Ft.	2,080
2-Car Garage	447
Covered Entry	32
Covered Screened Lanai	349
Total Sq. Ft.	2,942

INCLUDED PREMIUM FEATURES

ENERGY EFFICIENT HOMES - SAVING YOU MORE MONEY PER MONTH ON YOUR UTILITY BILLS

- Fresh air intake and insulated sealed duct air conditioning system for improved indoor air quality
- Low volatile organic compound (VOC) **Sherwin-Williams**® paints and **Mohawk**® carpet to improve well-being
- Exterior ventilation of microwave hood
- In-wall **Taexx**® pest defense system eliminates personal contact with active ingredients
- Energy efficient double-paned low-emissivity (*Low-E*) windows, sliders and glass doors
- **GE**®, ENERGY STAR® Stainless Steel appliances
- High efficiency **Carrier**® central air conditioning and heating
- Insulated fiberglass front entry door
- Energy-saving compact fluorescent light bulbs
- R-30 insulated ceiling and R-4.1 on block walls
- Energy-efficient quick-recovery water heater
- Automated irrigation system with rain sensor
- **Kohler**® water-saving plumbing fixtures
- Water-saving, dual-flush, comfort-height elongated water closets

FOR INCREASED SAFETY AND SECURITY

- Security system with contacts on all operable windows and doors (*Excluding overhead garage doors*), includes 1 year of monitoring
- 2 alarm keypad locations for added convenience (*Garage Entry and Foyer*)
- Decorative **Schlage**® satin nickel handle-set, entry dead bolt lock and door viewer
- Private 2-car garage with automatic opener and 2 transmitters
- Smoke and carbon monoxide detectors throughout
- Impact-rated windows on front elevation
- Tempered sliding glass doors and bathroom windows for your safety
- Direct mounted galvanized steel panel storm shutters on sides and rear

FOR IMPROVED INDOOR COMFORT AND LIVABILITY

- **Schlage**® satin nickel lever hardware on all interior doors
- Raised height vanities in all master and secondary bathrooms
- **Kohler**® satin nickel lever faucets for ease of use
- **Honeywell**® 7-day programmable thermostat with a digital display for enhanced viewing
- MERV 8 air conditioning filtration system
- Rocker-style electrical switches for ease of operation

FOR ENHANCED DESIGN

- 10' to 13' (*Paired Villas*) and 10' to 16'0" (*Single Family Homes*) ceiling heights per plan with architecturally enhanced coffered ceilings
- 5 1/4" sculpted colonial wood baseboards and 2 1/4" colonial wood casings
- Screened lanais on all plans
- 8' tall entry doors
- Over-sized walk-in closets in master bedrooms
- His and hers master bathroom raised height vanities
- Professionally designed lush landscape package with fully sodded lot

FOR GREATER CONVENIENCE

- 10-year structural warranty
- 3-year **GE**® appliance warranty
- 10-year limited warranty on the air conditioning and heating system parts

FOR HIGHER QUALITY CONSTRUCTION

- Independent 3rd party testing to ensure building envelope is sealed and energy losses are diminished
- Professional 3rd party verification of central air conditioning and heating system design for assurance of circulation, air flow and comfort

- Steel reinforced monolithic concrete foundation system with reinforced concrete block exterior walls
- Reinforced concrete block party walls and rake beam for improved strength and fire protection (*Paired Villas*)
- **Sherwin-Williams**® acrylic finish on garage floors
- Professionally engineered roof truss system
- Stucco exterior finish with 3rd party testing for improved weather protection
- **Sherwin-Williams**®, **Loxon**® 2-coat exterior paint system for long lasting color retention and climate protection
- Distinctive barrel-style cement roof tile
- PEX piping plumbing system for superior performance
- **DensShield**® tile backer at all tub and shower areas for added protection

EXCEPTIONAL INTERIOR FINISHES

Kitchen

- Granite counter tops with backsplash
- Designer selected recessed panel wood cabinets with 42" uppers, range and cabinet pantries (*2070 & 2345 models have built-in corner pantry*)
- Double compartment under-mount (*50/50 or 70/30*) stainless steel sink
- **Kohler**® faucet with integrated pull-out sprayer
- 1/2 hp Badger® garbage disposal
- Stainless Steel **GE**®, ENERGY STAR® 25 cubic foot side-by-side refrigerator with in-door ice and water
- Stainless Steel **GE**®, ENERGY STAR® sound insulated automatic dishwasher
- Stainless Steel **GE**® free-standing, smooth top, self-cleaning electric range
- Stainless Steel **GE**® microwave hood with exterior ventilation
- Recessed lighting with energy-saving compact fluorescent light bulbs

Master Bathroom

- Granite counter tops with backsplash
- Raised height recessed panel wood cabinet vanities with his and hers under-mount bathroom sinks and cabinet linen closets (*Per plan*)
- Frameless glass shower enclosures with tiled recessed soap niche
- Full width mirror over vanity with decorator selected **Progress Lighting**® satin nickel wall light above
- Recessed lighting with energy-saving compact fluorescent light bulbs
- Vapor proof recessed light with energy-saving compact fluorescent light bulb in shower
- **Mohawk**® 12"x12" ceramic tile floors, 8"x10" ceramic tile on shower walls and 2"x2" ceramic tile on shower floors
- **Kohler**® fixtures with lever handles for ease of use
- Bathroom exhaust fans on separate switch
- Towel and bath accessories
- Water-saving dual-flush, comfort-height elongated water closets

Secondary and Powder Bathrooms

- Granite counter tops with backsplash
- Raised height recessed panel wood cabinet vanities with under-mount sinks (*All secondary bathrooms*)
- Pedestal sink (*All powder bathrooms*)
- Full width mirror over vanity with decorator selected **Progress Lighting**® satin nickel wall light above
- Recessed lighting with energy-saving compact fluorescent light bulbs
- Vapor proof recessed light with energy-saving compact fluorescent light bulb over tub/shower
- **Mohawk**® 12"x12" ceramic tile floors, 8"x10" ceramic tile on tub/shower walls
- **Sterling**® bathtubs in all secondary bathrooms
- **Kohler**® fixtures with lever handles for ease of use
- Bathroom exhaust fans on separate switch
- Towel and bath accessories
- Water-saving dual-flush, comfort height elongated water closets

Laundry

- Granite counter tops with backsplash (*Per plan*)
- Designer selected recessed panel wood cabinets (*Per plan*)
- **GE** ENERGY STAR® washer with Stainless Steel basket and **GE** large capacity DURA DRUM™ dryer
- One row of ventilated wire shelving

WITHIN YOUR HOME

- 18" **Mohawk**® ceramic tile in foyer, kitchen, great room, living room, dining, a/c closet, café, and all wet areas
- Luxurious **Mohawk**® stain-resistant, low VOC carpeting with high performance carpet cushion in all bedrooms and den
- Knockdown textured finish on ceilings and light orange peel finish on interior walls
- 8' tall 6-panel interior doors
- High speed structured wiring network - CAT-5E data lines/connectors and RG-6 quad shield coaxial cable
- Telephone pre-wire in kitchen, great room, den, and all bedrooms
- Cable television pre-wire in great room, den, and all bedrooms
- Ceiling fan pre-wire in great room, den, covered lanai, and all bedrooms
- 50-gallon energy-efficient heat pump water heater
- Recessed lighting with energy-saving compact fluorescent light bulbs in entry, foyer (*Per plan*), kitchen, covered lanai, and all bathrooms
- Decorative **Progress Lighting**® satin nickel fixtures in all bathrooms, dining room, foyer (*Per plan*) and café
- Electric entry door chime

- White solid-surface window sills
- Vinyl clad steel ventilated closet shelving
- Air conditioned bathrooms and walk-in closets

OUTSIDE OF YOUR HOME

- Professionally designed lush landscape package with fully sodded lot
- Automated irrigation system with rain sensor
- **Sentricon**® termite elimination system
- **Progress Lighting**® coach lights
- Hose bibs at front and rear for your convenience
- Gutters at front entry (*Per plan*)
- Designer selected paver driveways, walkways, entries and covered lanais

MINTO ONLY USES QUALITY BRANDS



**SHERWIN
WILLIAMS®**



GE imagination at work

MOHAWK®

KOHLER®



mintofla.com

9008 ISLA BELLA CIRCLE, BONITA SPRINGS, FL 34135
(877) 539-0540



© Minto Communities, LLC 2013. All rights reserved. Content may not be reproduced, copied, altered, distributed, stored or transferred in any form or by any means without express written permission. Artist's renderings, dimensions, specifications, prices and features are approximate and subject to change without notice. Minto, the Minto logo, Bonita Isles and the Bonita Isles logo are trademarks of Minto Communities, LLC, and/or its affiliates. CGC1519880. 12/13

